

5280. Apr. 15th 1896.

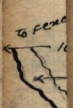
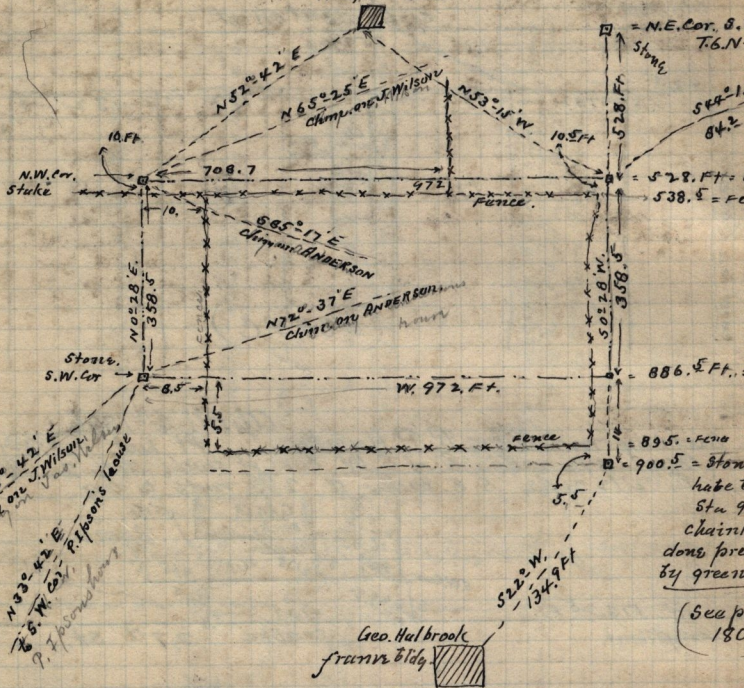
Survey made for Christian Anderson

(Wilson dist.)

17-481-

Jac & Wilson to Christian Anderson, 1/4 Sec. 26, T. 6, N. R. 14, S. 32 rods S. of N.E. Cor. sd. 1/4 Sec. S. 21 rods, 4 1/2 Ft. W. 58 rods, 4 1/2 Ft. N. 21 rods, 4 1/2 Ft. E 58 rods, 4 1/2 Ft.

P. Ippsons house



(See p 180)